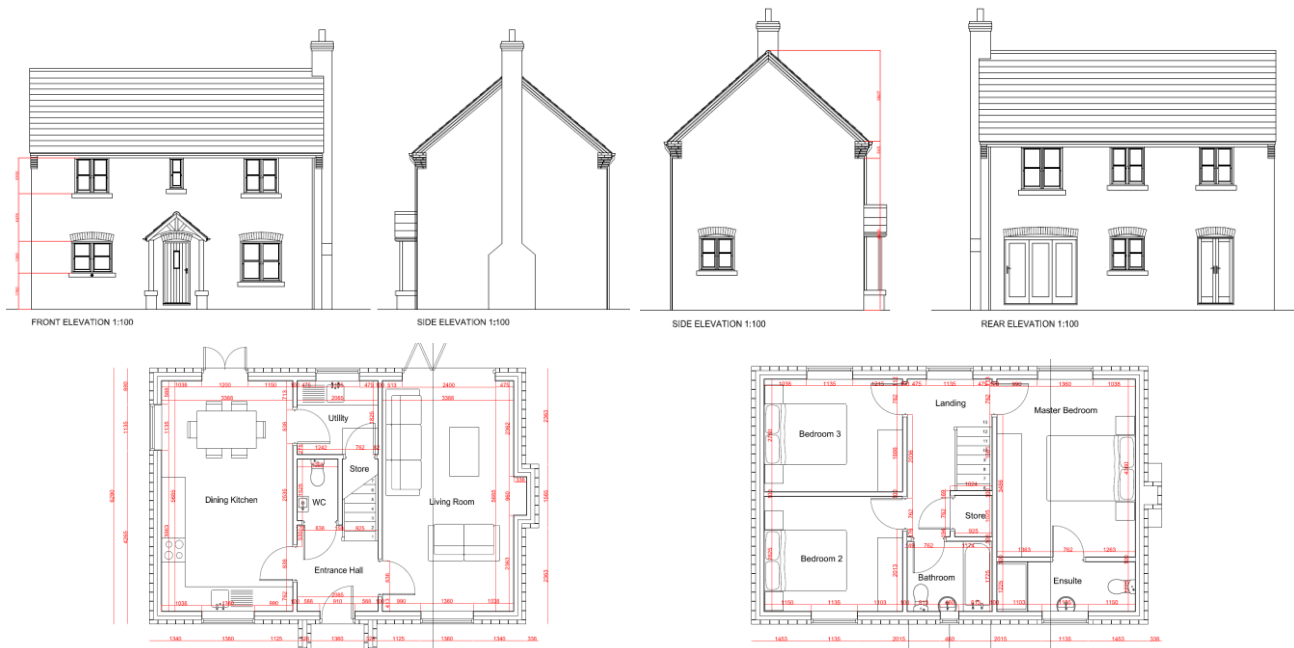


Plot 2 - The Bovat
£300,000.00



A development of 6 bespoke Architect designed luxury executive dwellings in the beautiful village setting of Walkeringham. A beautiful 3 bedroom detached house with a single detached garage and private rear garden. To the first floor of the property it comprises of 3 spaces bedroom with the master bedroom being en-suite with large family bathroom and separate storage room. To the ground floor the property comprises of entrance hall, kitchen-diner, utility, large living room and downstairs WC.

Ground Floor Measurements:

Living Room - 5685mm x 3388mm
Entrance Hall - 2085mm x 1786mm
WC - 1525mm x 1060mm
Utility - 2085mm x 1825mm
Kitchen/Diner - 5685mm x 3388mm

First Floor Measurements:

Master Bedroom/En-suite - 5685mm x 3388mm
Bedroom 2 - 3388mm x 2825mm
Bathroom - 2085mm x 1725mm
Landing/Storage - 3748mm x 2185mm
Bedroom 3 - 3388mm x 2760mm

Fountain Development

The Brickmakers, Fountain Hill Road, Walkeringham, Doncaster, DN10 4LT

01302 460098, info@fountaindevelopmentsltd.co.uk